



¿Qué es una ecuación de primer grado con una variable?

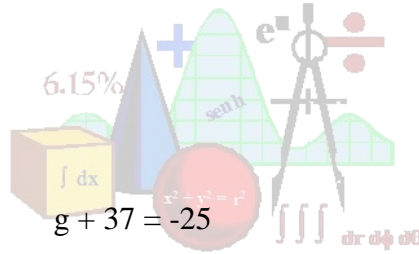


Resolver las siguientes ecuaciones

$x + 5 = 8$

$x - 6 = 7$

$x + 15 = 12$



$x - 18 = -34$

$g + 37 = -25$

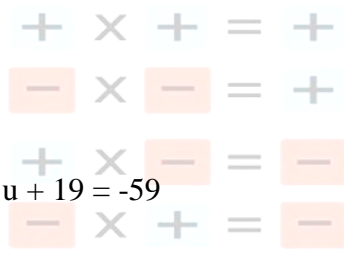
$m - 86 = 45$

<http://elclubdematematicas.jimdo.com>

$y + 9 = 8$

$y - 16 = -47$

$y + 19 = -15$



$y - 18 = -34$

$u + 19 = -59$

$m - 86 = 49$

$a - 5 = 23$

$v - 234 = 300$

$f + 35 = 67$



Resolver las siguientes ecuaciones

$2x = 8$

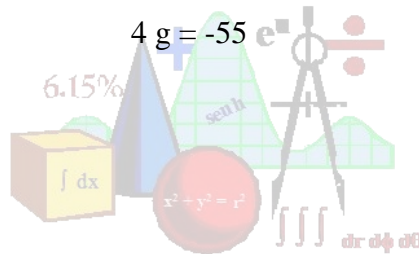
$-5x = 7$

$2x = 15$

$5x = -24$

$4g = -55$

$7m = 45$



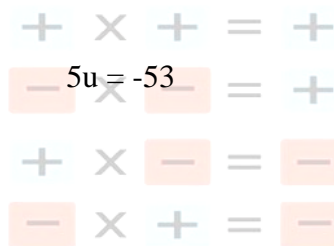
$2y = 8$

$-4y = -47$

$5y = -15$

<http://elclubdematematicas.jimdo.com>

$-5y = -24$



$-5m = 43$

$3a = 23$

$-4v = 300$

$2f = 67$



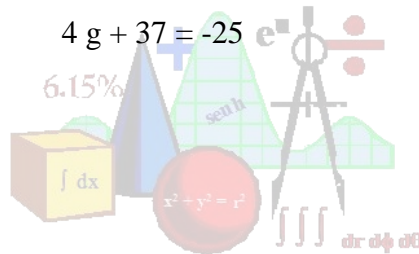
Resolver las siguientes ecuaciones

$$3x + 5 = 8$$

$$-2x - 6 = 7$$

$$3x + 15 = 12$$

$$5x - 18 = -34$$



$$4g + 37 = -25$$

$$7m - 86 = 45$$

$$3y + 9 = 8$$

$$-4y - 16 = -47$$

$$2y + 19 = -15$$

<http://elclubdematematicas.jimdo.com>

$$-2y - 18 = -34$$

+	×	+	=	+
5u + 19	×	-59	=	+

$$-5m - 86 = 49$$

+	×	-	=	-
-	×	+	=	-

$$3a - 5 = 23$$

$$-4v - 234 = 300$$

$$2f + 35 = 67$$



Resolver las siguientes ecuaciones

$$3x + 5 = 8x - 5$$

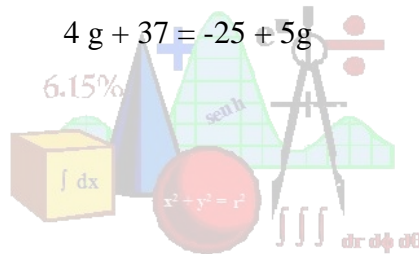
$$-2x - 6 = 7 + 2x$$

$$3x + 15 = 12 - 5x$$

$$5x - 18 = -34 + 4x$$

$$4g + 37 = -25 + 5g$$

$$7m - 86 = 45m + 4$$



$$3y + 9 = 8y - 45$$

$$-4y - 16 = -4 + 6y$$

$$2y + 19 = -15 + 4y$$

<http://elclubdematematicas.jimdo.com>

$$-2y - 18 = -34y + 5$$

$$5u + 19 = -59 + u$$

$$-5m - 86 = 49m - 5$$

$$+ \times - = -$$

$$- \times + = -$$

$$3a - 5 = 23a - 12$$

$$-4v - 234 = 300 - 2v$$

$$2f + 35 = 67 - 5f$$