

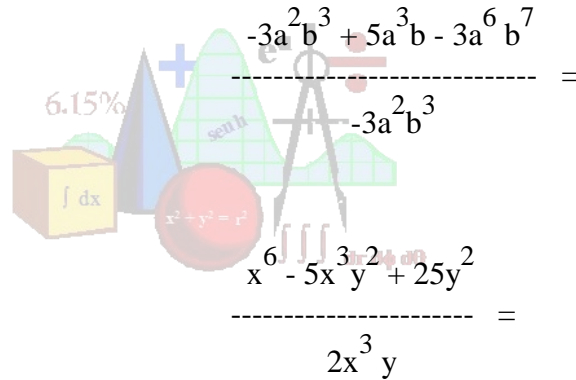


Resolver las siguientes divisiones con polinomios

$$\frac{x^2 - 5x}{-x} =$$

$$\frac{4x - 8x^4 + 2x^3}{2x} =$$

$$\frac{2yx^2 + 3y}{3y} =$$



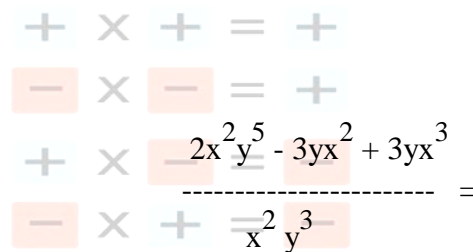
$$\frac{16x^2 - 5x + 20x^4}{-4x} =$$

$$\frac{x^6 - 5x^3y^2 + 25y^2}{2x^3y} =$$

$$\frac{4x^4 - 6x^2y + 9y^2}{2x^2y} =$$

$$\frac{x^2 - 25}{x + 5} =$$

$$\frac{2yx + 3y^2x - 3y^3}{6y} =$$



$$\frac{-3a^2b^3}{6a^4b^2} =$$

$$\frac{10z^2v^5}{5x^3v^6z^2} =$$